



TTS-800 SERIES GOLF ROTORS

The second generation of the first-ever top-serviceable rotor

MODELS



GT-880



GT-884



GT-885

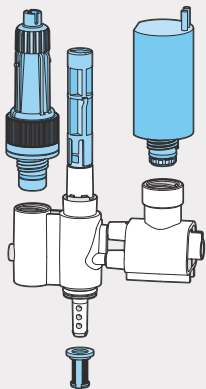
KEY BENEFITS

Exclusive PressurePort™ Technology

Maximizes distribution uniformity by optimizing each individual nozzle's incoming water pressure

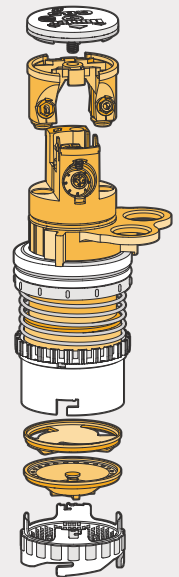
Save time and money with top-serviceable features!

Solenoid and pressure regulators are serviceable without system depressurization



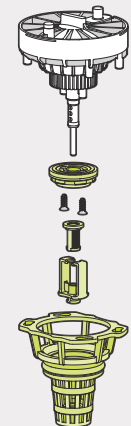
Patented planetary gear drive with the highest torque in the industry

Mitigates the challenges of reclaimed water use or poor water quality



Proprietary Filter Sentry™ Mechanism

Cleans the diaphragm filter with every opening and closing cycle of the rotor



hunter.info/TTS

Hunter®

IN THE FIELD

1 Challenge: I'm dealing with distribution problems. What makes TTS-800 Series Golf Rotors perform better in terms of distribution?

Solution: Every TTS-800 Rotor is equipped with exclusive PressurePort Nozzle Technology that maximizes distribution uniformity by optimizing each nozzle's incoming water pressure. This means better-performing nozzles, better coverage, and better playing turf! Scan the QR code to discover how much water you can save with our top-performing TTS-800 Series Rotors.



hunter.info/WaterSavings

2 Challenge: I currently have a competitor control system. Will Hunter Golf rotors work with my system?

Solution: All Hunter Golf rotors are compatible with any conventionally wired, 24 VAC output control system. Hunter also makes one 24 VAC solenoid for every valve product we sell, which means that the solenoid you use for your Hunter valve-in-head rotors will work on any Hunter valve you may use around the clubhouse or course property. For added assurance, every solenoid is electrically and water-tested for unmatched reliability.



hunter.info/GolfRotors

ROTOR COMPARISON

FEATURES	TTS-800	Competitor 1	Competitor 2
Total-Top-Service Design	Yes	No	Yes
Largest Flange Compartment in the Industry	Yes	N/A	No
Single-Point, ¼-Turn Flange Compartment Access	Yes	N/A	No
Adjustable Arc with True Non-Reversing Full-Circle	Yes	No	No
Serviceable Solenoid & Regulator Without Depressurization	Yes	No	Yes
Serviceable Rock Screen & Seat Seal in Inlet Valve	Yes	No	No
Contamination-Resistant FilterSentry™ Inlet Valve	Yes	No	No
PressurePort™ Nozzle Technology	Yes	No	No
Variable Pressure Regulator	Yes	No	No
Planetary Gear Drive	Yes	No	Yes