



LACROSSE FIELD
I-25 FOUR ROW DESIGN
LOOPED MAINLINE

Hunter Industries
1940 Diamond Street
San Marcos, California 92078
SpecPro Technical Assistance
1-800-319-4796
www.HunterIndustries.com

SHEET

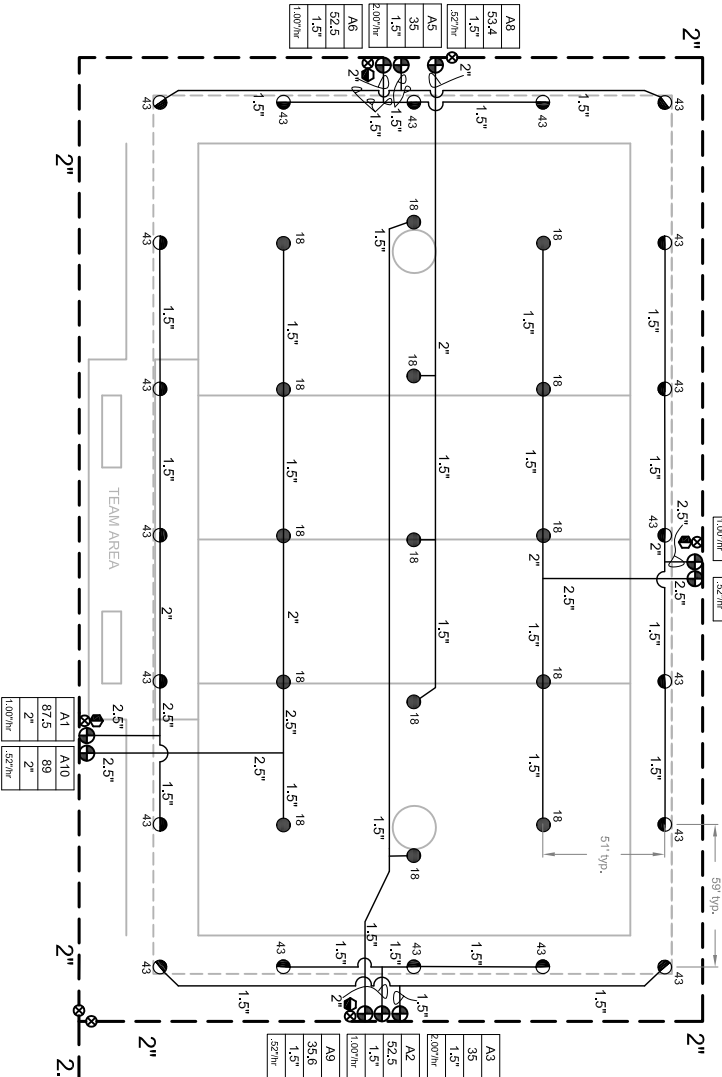
1 OF 1

WATER REQUIREMENT

-AT FIELD ELEVATION
-WITHIN 100' OF FIELD
-DOWNSTREAM OF BACKFLOW IS 89
GPM @ 90 PSI

VALVE ID GUIDE

A1	STATION NUMBER
55	GPM
1.5"	VALVE SIZE
500/HR	PRECIPITATION RATE



IRRIGATION LEGEND

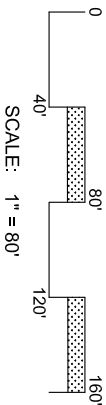
- PRODUCT DESCRIPTION
 - HUNTER I40-04-SS-XX/I40-06-SS-XX NOZZLE AS SHOWN
 - HUNTER I40-04-SS-XX/I40-06-SS-XX NOZZLE AS SHOWN
- NOZZLE PERFORMANCE:
 - #43 @ 80 PSI - 17.5 GPM 61' RADIUS
 - #48 @ 80 PSI - 17.8 GPM 62' RADIUS
- HUNTER ICV/IBV ELECTRIC CONTROL VALVE SIZE AS SHOWN
- HUNTER HO-44-XX-AW QUICK COUPLER VALVE (OPTIONAL)
- HUNTER AGC-1200 SOLID STATE METAL CABINET CONTROLLER
- HUNTER SOLAR-SYNC-SEN On Site Weather Sensor
- WATER METER MINIMUM SIZE @ 89 GPM IS 2.0"
- BACKFLOW PREVENTER SIZED TO SYSTEM GPM
- MAINLINE PIPE
- LATERAL PIPE
- SLEEVING
- ISOLATION VALVE LINE SIZED
- HUNTER FLOW SENSOR IN LINE SIZED FLOW CLIK TEE "FCT"

IRRIGATION NOTES

- SPRINKLER LOCATIONS ARE TO SCALE
- PIPE LOCATIONS ARE DIAGRAMMATIC
- ALL SPRINKLERS TO BE INSTALLED ON 1" SCH 80 SWING JOINTS
- ALL COMPONENTS TO BE INSTALLED AS PER MANUFACTURERS RECOMMENDATIONS
- MAINLINE DEPTH TO BE NO LESS THAN 18"
- LATERAL DEPTH TO BE NO LESS THAN 16"
- ELECTRIC CONTROL VALVES TO BE COVERED WITH 12" VALVE BOX
- LOCATE VALVES/OCVs OUT OF HIGH TRAFFIC AREAS
- WIRE SPICE CONNECTIONS TO BE WATERPROOF
- OCV TO BE LOCATED IN 10" VALVE BOX
- ALL SLEEVES TO BE 2X PIPE RUN THROUGH THEM
- INSTALL ALL COMPONENTS AS PER LOCAL, STATE, FEDERAL CODES
- REFER TO HUNTER INSTALLATION DETAILS
- REFER TO HUNTER CATALOG FOR PERFORMANCE SPECIFICATIONS
- ADD HUNTER "FS" FOR DIRTY WATER VALVE
- ADD HUNTER "AS" FOR PRESSURE REGULATED VALVE

SYSTEM PERFORMANCE DATA

ZONE	SIZE	FLOW	PR	DU	SC
A1	2"	87.5	1.00"	.83	1.3
A2	1.5"	52.5	1.00"	.83	1.3
A3	1.5"	35	2.00"	.83	1.3
A4	2"	87.5	1.00"	.83	1.3
A5	1.5"	35	2.00"	.83	1.3
A6	1.5"	52.5	1.00"	.83	1.3
A7	2"	89	.52"	.81	1.3
A8	1.5"	53.4	.52"	.81	1.3
A9	1.5"	35.6	.52"	.81	1.3
A10	2"	89	.52"	.81	1.3



Hunter Industries offers this plan as a general guide for estimating purposes and offers no indemnity, expressed or implied, for projects installed from this plan. Because of the many variables of every system and of every site we recommend that a qualified irrigation designer be consulted.