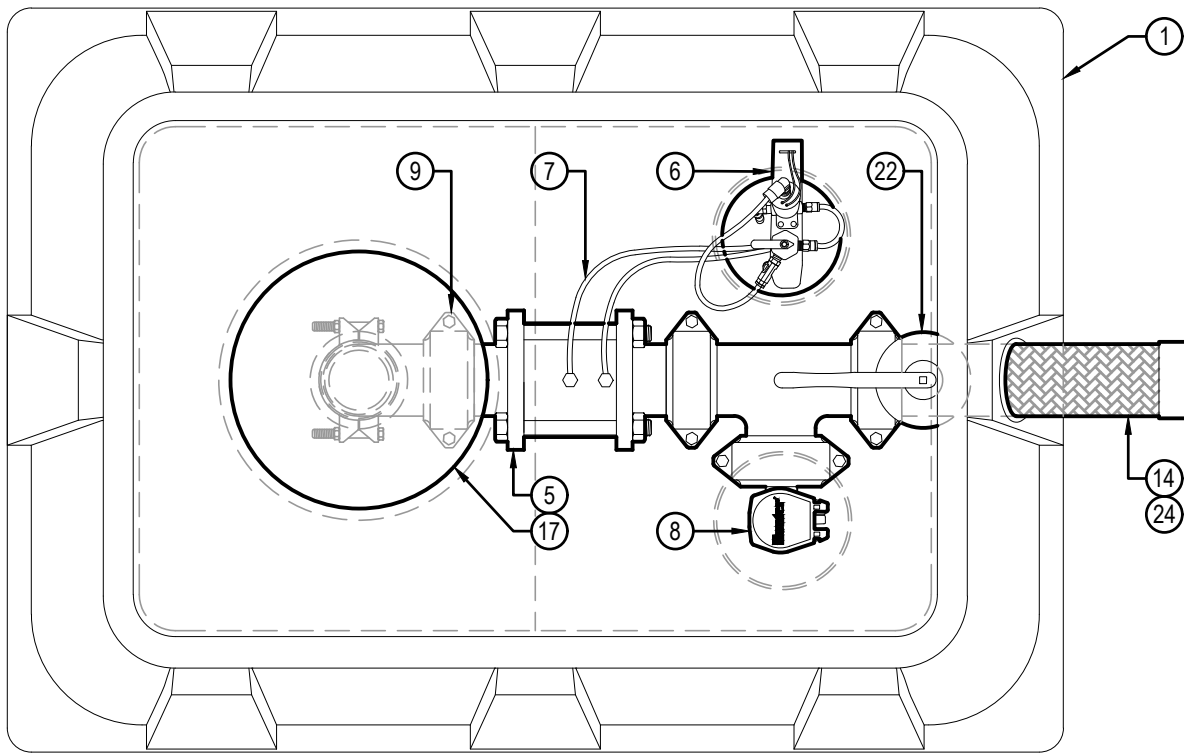
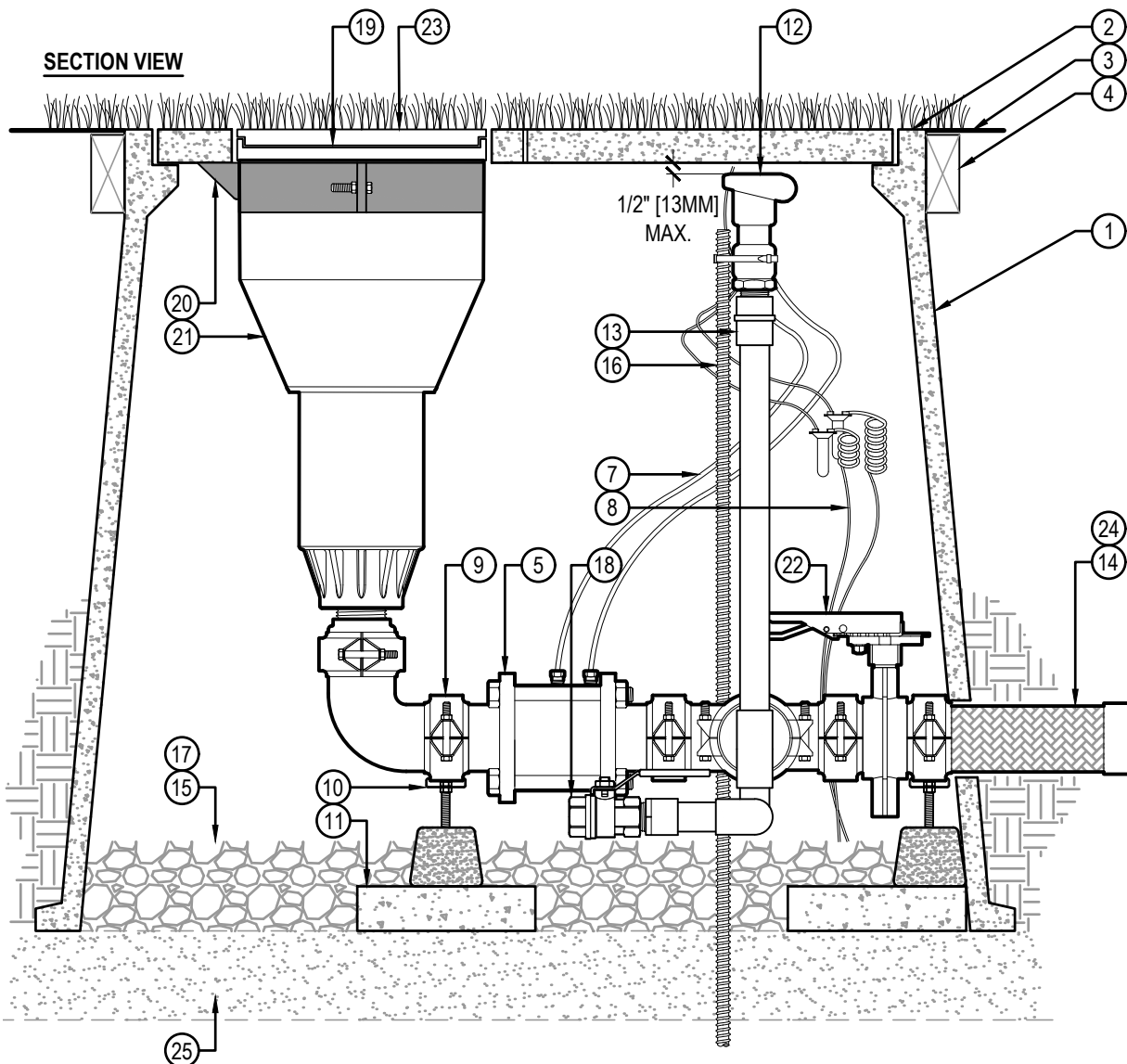


**PLAN VIEW**  
(COVER NOT SHOWN FOR CLARITY)



**SECTION VIEW**



**LEGEND**

- ① HUNTER ST243636B\* COMPOSITE VAULT & 4-PIECE POLYMER-CONCRETE LID ASSEMBLY WITH CAST-IN OPENING TO SUPPORT ROTOR LATERAL THRUST PLUS CAST IN OPENINGS WITH CIRCULAR COVERS FOR QUICK COUPLER AND ON-OFF-AUTO SELECTOR ACCESS
  - ② SYNTHETIC TURF GLUED TO COVERS (OR AS SPECIFIED)
  - ③ FINISHED GRADE SET TO FIELD PERIMETER TACK/GLUE BOARD OR AS SPECIFIED
  - ④ TACK/GLUE BOARD AS SPECIFIED (ALL SIDES)
  - ⑤ HUNTER ST-V30KV ULTRA LOW LOSS 3" [80MM] VALVE KIT WITH GROOVED FITTING CONNECTIONS
  - ⑥ REMOTE ON-OFF-AUTO SELECTOR SWITCH AND SOLENOID ASSEMBLY MOUNTED BELOW CIRCULAR QUICK-ACCESS PORT
  - ⑦ COLOR CODED CONTROL TUBING FROM ST-V30KV VALVE TO SELECTOR SWITCH ASSEMBLY
  - ⑧ LEAD WIRES FROM SOLENOID TO CONTROL WIRES WITH WATERPROOF SPLICE CONNECTORS AS SPECIFIED
  - ⑨ HUNTER ST-BVF30K ISOLATION VALVE AND FITTING KIT WITH GROOVED CONNECTIONS AND 500 PSI RATED COUPLINGS (TO CONNECT ROTOR AND CONTROL VALVE TO MANIFOLD INLET)
  - ⑩ HUNTER ST-SPTK ADJUSTABLE MANIFOLD SUPPORT BLOCK ADJUSTED TO SUPPORT MANIFOLD WEIGHT; (2) REQUIRED
  - ⑪ SUPPORT PAD (16" X 8" X 2" [41 CM X 20.5CM X 50MM]) CONCRETE STEPPING STONE OR AS SPECIFIED; (2) REQUIRED
  - ⑫ HUNTER HQ5RC QUICK COUPLING VALVE SET DIRECTLY BELOW CIRCULAR QUICK-ACCESS PORT
  - ⑬ QUICK COUPLER RISER AND FITTINGS: 1" [25MM] MINIMUM SCH. 80 OR AS SPECIFIED
  - ⑭ HUNTER ST-H30K 3" [80MM] STAINLESS STEEL FLEXIBLE INLET PIPE
  - ⑮ 3/4" MINUS WASHED GRAVEL
  - ⑯ 5/8" X 48" REBAR STAKE AND STAINLESS STEEL PIPE CLAMPS
  - ⑰ PROVIDE DRAINAGE VIA FIELD DRAINAGE SYSTEM
  - ⑱ BRASS MANUAL BALL VALVE (INCLUDED WITH ST-BVF30K)
  - ⑲ HUNTER ST-IBS1600 RUBBER COVER AND INFILL BARRIER KIT WITH TRIM REFERENCE RINGS TO ALLOW HEIGHTS FROM 1-1/4" [32MM] TO FLAT (SYNTHETIC TURF WITH INFILL TO TRACK MATERIALS APPLICATIONS)
  - ⑳ HUNTER ST-BKT1600 ROTOR HANGER AND ELEVATION ADJUSTMENT BRACKET
  - ㉑ HUNTER ST-1600B ROTOR
  - ㉒ ISOLATION VALVE: BUTTERFLY TYPE WITH GROOVED CONNECTIONS (INCLUDED WITH ST-BVF30K)
  - ㉓ HUNTER ST-FRP1600 MATERIAL ATTACHED TO FLATTENED ST-IBS1600 USING HUNTER ST-ADH ADHESIVE AND APPROVED PROCEDURES
  - ㉔ WRAP FLEXIBLE INLET PIPING WITH HEAVY-DUTY PLASTIC PIPE WRAP TAPE PRIOR TO BACKFILL AND COMPACTION
  - ㉕ BASE PAD AS SPECIFIED, 42" X 48" [107 X 122CM] MINIMUM
- \*ENCLOSURE DIMENSIONS  
 4 - PIECE COVER - 24" X 36" [50CM X 76CM]  
 EXPOSED RIM - 26" X 38" [66CM X 96.5CM]  
 OVERALL HEIGHT - 36" [76CM]



**SYNTHETIC TURF KIT (STK-6V) WITH VALVE ADJACENT HEAD IN SYNTHETIC TURF**

Hunter® STK.6V.01

NO SCALE