

IRRIGATION LEGEND

PRODUCT DESCRIPTION

- HUNTER I-25-04-SS-XX/I-25-06-SS-XX, NOZZLE AS SHOWN
- HUNTER I-25-04-SS-XX/I-25-06-SS-XX, NOZZLE AS SHOWN

NOZZLE PERFORMANCE:

#23 @ 80 PSI - 25.6 GPM 66' RADIUS

- ⊕ HUNTER ICV/BV ELECTRIC CONTROL VALVE SIZE AS SHOWN
- ⊕ HUNTER HQ-44-XX-AW QUICK COUPLER VALVE (OPTIONAL)
- ⊕ HUNTER ACC-1800 SOLID STATE METAL CABINET CONTROLLER
- ⊕ HUNTER SOLAR-SYNC-SEN ON SITE WEATHER SENSOR
- ⊕ WATER METER MINIMUM SIZE @ 102 GPM IS 2.0"
- ⊕ BACKFLOW PREVENTER SIZED TO SYSTEM GPM

- MAINLINE PIPE
- LATERAL PIPE
- SLEEVING

- ⊗ ISOLATION VALVE LINE SIZED
- ⊕ HUNTER FLOW SENSOR IN LINE SIZED FLOW CLIK TEE "FCT"

IRRIGATION NOTES

1. SPRINKLER LOCATIONS ARE TO SCALE
2. PIPE LOCATIONS ARE DIAGRAMMATIC
3. ALL SPRINKLERS TO BE INSTALLED ON 1" SCH 80 SWING JOINTS
4. ALL COMPONENTS TO BE INSTALLED AS PER MANUFACTURERS RECOMMENDATIONS
5. MAINLINE DEPTH TO BE NO LESS THAN 18"
6. LATERAL DEPTH TO BE NO LESS THAN 16"
7. ELECTRIC CONTROL VALVES TO BE COVERED WITH 12" VALVE BOX
8. LOCATE VALVES/QCV'S OUT OF HIGH TRAFFIC AREAS
9. WIRE SPLICE CONNECTIONS TO BE WATERPROOF
10. QCV TO BE LOCATED IN 10" VALVE BOX
11. ALL SLEEVES TO BE 2X PIPE RUN THROUGH THEM
12. INSTALL ALL COMPONENTS AS PER LOCAL, STATE, FEDERAL CODES
13. REFER TO HUNTER INSTALLATION DETAILS
14. REFER TO HUNTER CATALOG FOR PERFORMANCE SPECIFICATIONS
15. ADD HUNTER "FS" FOR DIRTY WATER VALVE
16. ADD HUNTER "AS" FOR PRESSURE REGULATED VALVE

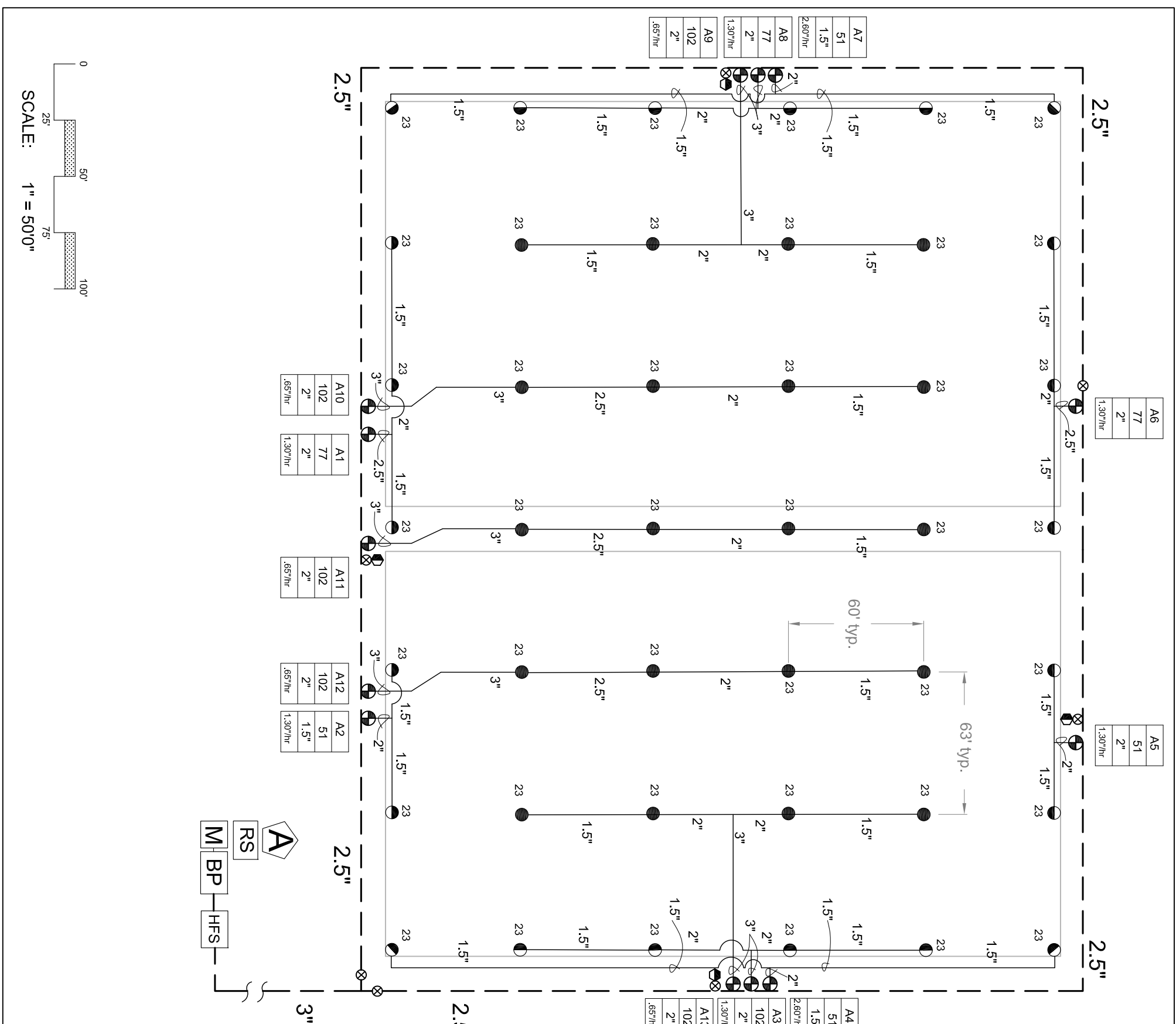
WATER REQUIREMENT SYSTEM PERFORMANCE DATA

-AT FIELD ELEVATION
-WITHIN 100' OF FIELD
-DOWNSTREAM OF BACKFLOW IS
102 GPM @ 90 PSI

ZONE	SIZE	FLOW	PR	DU	SC _(10% WINDOWN)
A1	2"	77	1.30"	.84	1.1
A2	2"	51	1.30"	.84	1.1
A3	2"	102	1.30"	.84	1.1
A4	2"	51	2.60"	.84	1.1
A5	2"	51	1.30"	.84	1.1
A6	2"	77	1.30"	.84	1.1
A7	2"	51	2.60"	.84	1.1
A8	2"	77	1.30"	.84	1.1
A9	2"	102	.65"	.84	1.1
A10	2"	102	.65"	.84	1.1
A11	2"	102	.65"	.84	1.1
A12	2"	102	.65"	.84	1.1
A13	2"	102	.65"	.84	1.1

VALVE ID GUIDE

A1	STATION NUMBER
55	GPM
1.5"	VALVE SIZE
.50"/hr	PRECIPITATION RATE



SCALE: 1" = 50'0"

