

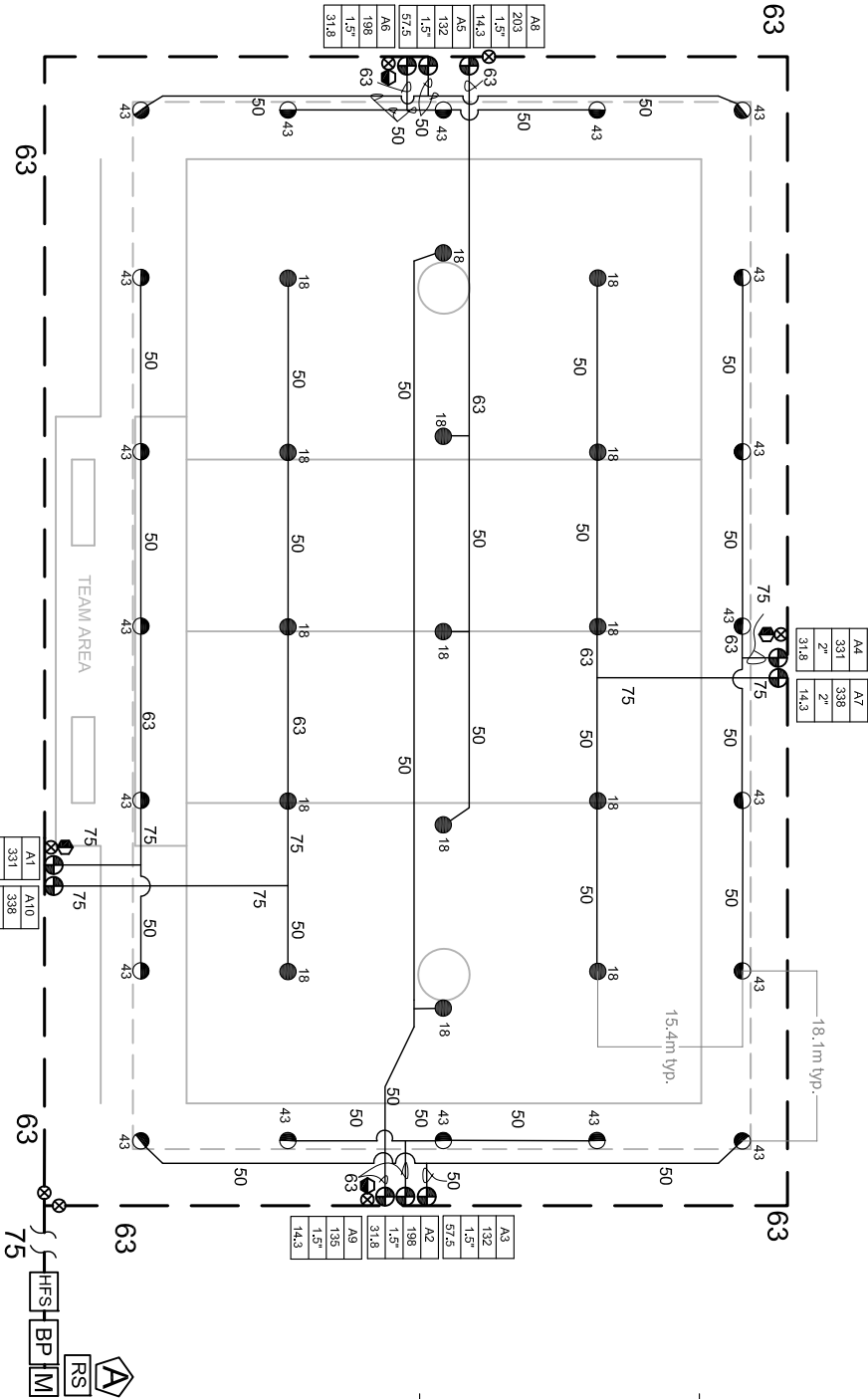
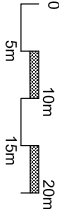
WATER REQUIREMENT
WATER REQUIREMENT AT
-FIELD ELEVATION
-WITHIN 30m OF FIELD
-DOWNSTREAM OF
-BACKFLOW
IS 338 l/min @ 6.7 Bars

VALVE ID GUIDE

A1	STATION NUMBER
273	l/min
VALVE SIZE	
1.5"	PRECIPITATION RATE mm/hr
1.5"	1.5"
1.5"	1.5"

SYSTEM PERFORMANCE DATA

ZONE	SIZE	FLOW	PR	DU	SC
A1	2"	19.9	338	25.1	1.3
A2	1.5"	19.9	338	25.1	1.3
A3	1.5"	7.9	132	53.5	1.3
A4	2"	19.9	331	25.1	1.3
A5	1.5"	7.9	132	53.5	1.3
A6	1.5"	11.1	185	25.1	1.3
A7	2"	20.3	338	12.8	1.3
A8	1.5"	12.2	203	12.8	1.3
A9	1.5"	8.1	135	8.1	1.3
A10	2"	20.3	338	12.8	1.3



IRRIGATION NOTES

1. SPRINKLER LOCATIONS ARE TO SCALE
2. PIPE LOCATIONS ARE DIAGRAMMATIC
3. ALL SPRINKLERS TO BE INSTALLED ON 32mm SCH 80 SWING JOINTS
4. ALL COMPONENTS TO BE INSTALLED AS PER MANUFACTURERS RECOMMENDATIONS
5. MAINLINE DEPTH TO BE NO LESS THAN 460mm
6. LATERAL DEPTH TO BE NO LESS THAN 410mm
7. ELECTRIC CONTROL VALVES TO BE COVERED WITH 12" VALVE BOX
8. LOCATE VALVES/OCV'S OUT OF HIGH TRAFFIC AREAS
9. WIRE SPICE CONNECTIONS TO BE WATERPROOF
10. OCV TO BE LOCATED IN 10" VALVE BOX
11. ALL SLEEVES TO BE 2X PIPE RUN THROUGH THEM
12. INSTALL ALL COMPONENTS AS PER LOCAL, STATE, FEDERAL CODES
13. REFER TO HUNTER INSTALLATION DETAILS
14. REFER TO HUNTER CATALOG FOR PERFORMANCE SPECIFICATIONS
15. ADD HUNTER "FS" FOR DIRTY WATER VALVE
16. ADD HUNTER "AS" FOR PRESSURE REGULATED VALVE

IRRIGATION LEGEND

- PRODUCT DESCRIPTION
HUNTER I-40-04-SS-ON-B-XX/I-40-06-SS-ON-B-XX, NOZZLE AS SHOWN
- NOZZLE PERFORMANCE:
#43 @ 5.5 Bars - 66.1 l/min 18.6m RADIUS
#18 @ 5.5 Bars - 67.3 l/min 18.9m RADIUS
- HUNTER IC/IBY ELECTRIC CONTROL VALVE SIZE AS SHOWN
- HUNTER HC-44-XX-AW QUICK COUPLER VALVE (OPTIONAL)
- HUNTER ACC-1200-M SOLID STATE METAL CABINET CONTROLLER
- HUNTER SOLAR-SYNC-SEN ON SITE WEATHER SENSOR
- WATER METER MINIMUM SIZE @ 338 l/min IS 63mm
- BACKFLOW PREVENTER SIZED TO SYSTEM l/min
- MAINLINE PIPE
- LATERAL PIPE
- SLEEVING
- ⊗ HUNTER FLOW SENSOR IN LINE SIZED FLOW CLIK TEE "FCT"